

Rotary
District 9212



FLOODING EMERGENCY NEEDS ASSESSMENT AND RESPONSE PROPOSAL -2024

Emergency
Response



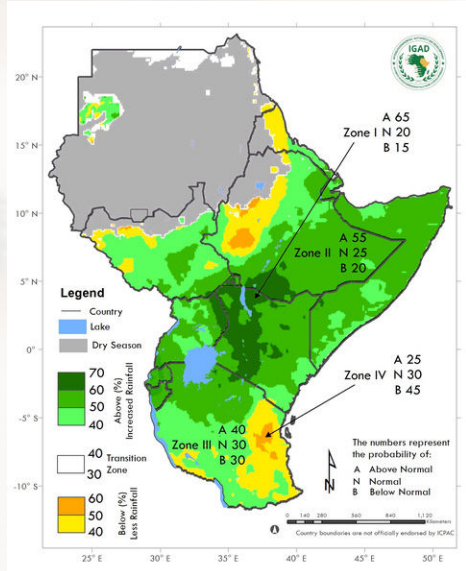


KEY PROJECT DATA

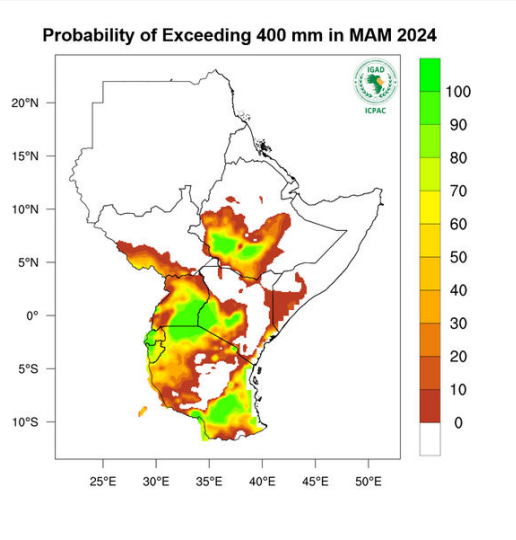
PROJECT NAME	Flood Emergency response
LOCATION	Flood affected counties in Kenya
NUMBER OF BENEFICIARIES	100,000
PROJECT PARTNERS	Rotary District 9212, DNA-RAG
IMPLEMENTATION PERIOD	May 1st to August 1st 2025
Project Budget	

FLOODING EMERGENCY IN EAST AFRICA

The East African region has been inundated heavy rainfall sometimes topping 200mm per day which is causing heavy flooding. The March-April- May rainy season was forecasted to have increase rainfall in the region as shown in the figure below:



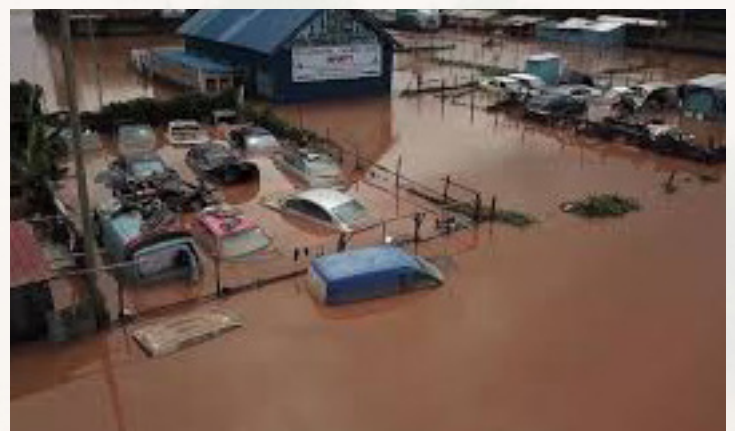
Over 400mm of rainfall was forecast in many areas as shown in the figure below:



Many places in Kenya, Uganda, Ethiopia and Tanzania are forecasted to receive more than 400mm of rainfall. This will be exacerbated by Tropical cyclone Hidaya that is expected to make landfall on the Coast of Tanzania between 3rd and 4th May with heavy rainfall forecast for the region.

A Nationwide assessment of all dams has been conducted and 192 dams identified to be high risk in **Central** (60), **Eastern** (39), **Rift Valley** (29), **Coast** (22), **Western** (21), **Nairobi** (12), **North Eastern** (5), and **Nyanza** (4).

EFFECTS IN KENYA	
Parameter	Number
Deaths	210
Missing Persons	90
Injuries	125
Displaced Households	33100
Displaced persons	165,500
Total people impacted	1986,296
Total schools affected	1,967





ROTARY D9212 INTERVENTION

- Emergency response teams from the District working with the clubs alongside the Kenya Red Cross are taking part in recovery efforts and provision of temporary shelter, food, clothing, water, medicine among others
- The number of persons affected is rising rapidly and fundraising efforts have not matched the need

GAPS

1.0 Shelter Provision

The required quantities currently are 16,000 shelter kits with the numbers expected to rise to top 100,000 kits. The pricing for the components of the kit is broken down below in US Dollars.

Item	Unit	Unit Cost in USD
Kitchen Sets	PCS	25
Tarpaulin	PCS	30
Bar Soaps	PCS	2
Mosquito Nets	PCS	8
Foldable Jerry Cans	PCS	2
Blankets	PCS	10
Sleeping Mats	PCS	12



2.0 WASH

Water sources have been contaminated, latrines and toilets washed away and in the short term there is an urgent need to provide quality drinking water to avoid water borne diseases. In order to meet the urgent needs, we require the following in large quantities to alleviate water borne diseases:

Item	Unit	Unit Cost in USD
Aluminum sulphate	bag	30
Chlorine 65	tins	32
Chlorine pool Tester	PCS	0.1
Aquatabs	PCS	0.1
PUR	sachets	0.1
Pillow tank 5000 litres	PCS	2050
Pillow tank 3500 litres	PCS	1950
Hand washing stations	PCS	70
Portable water treatment equipment	unit	40000



3.0 Health care

Item	Unit Cost in USD
Cholera treatment kits	0.5
Malaria treatment kits	0.5
Fumigation chemicals	30
Knapsack sprayers	80
Heat stable Cabetocin	100
NAS-G	100
Nutrition supplements	50
Motorbikes for emergency re- sponse	3500

4.0 others

Item	Unit Cost in USD
Food distribution to 12,000 Households	70,000
Search and rescue equipment/ support	30,000
Rainwater harvesting	150,000
Tree planting	10,000
Community sensitization	10,000
Provision of MHM kits/support SGBV centres	10,000



Contact Person (s):

DG. Leonard Ithau- D9212 .

Tel: + 254 722 203 324

Email: leonard.ithau@rotary9212.org

**Emergency Response Coordinator- Gilbert
Mato**

Tel: +254 759 320043

Gilbert.mato@gmail.com

Rotary Foundation Chair- Protus Lumiti

Tel: +254 722 705 556

Email: Improtus@gmail.com

**District Service Projects Chair- D9212- Rose
Chege**

Tel: +254 711 238200

Email: roseychege@gmail.com